

Smart Home

Life under control

THE JEWEL OF WAIKIKI

Technology has raised luxury service to new heights in one of Hawaii's most seductive celebrity hotspots

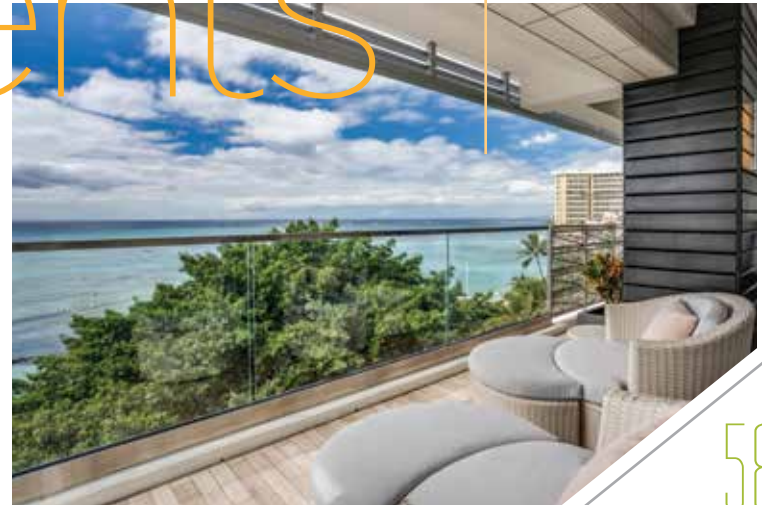
WORLD OF WONDER

A 200-year-old Victorian stunner with state-of-the-art smarts will take you on a world tour

LIVING POSH IN POLAND

52 stories of automated apartments boast unique aesthetics and architecture

contents



58

WHERE WERE YOU IN Y2K?

Were you partying like it was 1999 or preparing for digital demise?

6

STARTING SMART SERIES

The best way to begin your smart home journey starts here.

10

20 TANTALIZING TECH FACTS

Put your tech knowledge to the test with this quick quiz.

16

TRENDING TECH FOR TRAVELERS

Here, there, smart tech that goes anywhere.

18

TECHORATING TRENDS: START IN A SHOWROOM

The ideal starting point for your smart home endeavors.

20

WORLD OF WONDER

A townhome transformed with tech will take you to the four corners of the earth.

22



22

36 A DRIVING FORCE THAT'S ROLLING FIERCE

This intelligent ride will get your engines revving.

40 LIVING POSH IN POLAND

A skyline beauty with some serious brains.

52 ROAD WARRIOR

Home is where the smart is, even when it's on wheels.

56 CREATE A "BRIGHTER" BACKYARD

Enjoy great technology in the great outdoors.

58 THE JEWEL OF WAIKIKI

A Hawaii hotspot that brings the brains to the beach.

40



editor's note



Crystal Watts
editor@control4.com

EDITOR
Crystal Watts

DESIGN
Brett Lloyd, Live Matter

DESIGN
CONTRIBUTORS
Tazia Schoenfeld
Kevin Hole

TECHNICAL EDITOR
Mike Sawyer

CONTENT
CONTRIBUTORS
Elizabeth Kotz
Christopher Sterle
Joni Wittenbach
Lisa Montgomery
Danielle Karr

As we close the cover of this new issue and I pen the last installment (this note), we find ourselves in the throes of history. The COVID-19 pandemic crept up on us inconspicuously and has since swept the world, altering life as we know it.

I've struggled with how to properly articulate my thoughts, as a large part of this issue of *Smart Home* is centered around the splendor of travel and the joy of fashioning memories from new experiences. Now that we are confined to our homes and journeying feels like a distant memory, what good is this issue now?

The answer? Dreaming of what's to come.

Stay-at-home orders won't last forever; life will resume, and travel will pursue. Looking at this issue through new lenses allows us to fantasize about the future. When the haze has lifted, adventures await. Plan to visit somewhere new and exciting. Or, instead of a physical journey, you may find yourself remodeling or finally finding that dream home you've been longing for.

This moment is a time of reflection and looking toward the future. It's about making plans, enjoying the loved ones around us, and creating spaces in our homes that are enjoyable and functional for our temporary "new normal."

Humans are dreamers by nature. My hope is that these stories will further invigorate your dreams and allow you to look at forthcoming experiences with renewed enthusiasm.

NEW G

NOTEWORTHY



Signature by Episode

A SPEAKER BUILT ON SCIENCE

Episode Signature is the jaw drop in every movie. It's the air guitar in every jam session. It's the sound that pulls heartstrings, starts parties, and amplifies your life. It's pure, unfiltered, and unforgettable harmony. You know it when you see it, hold it, and hear it, because it always makes a mark. The all-new Signature by Episode line uses scientific principles of sound for the cleanest audio reproduction imaginable.



Let There Be Light!

(AND LET IT BE SMART)

Control one light or multiple lights with a tap on a mobile app or a touchscreen, or with the sound of your voice. With newly expanded options, Control4 smart lighting is now available for every home and every budget.

- Adjust custom levels to set the mood
- Manage efficiency on a schedule
- Never come home to a dark house
- Put your mind at ease when you're away from home
- Listen to music, adjust the shades, or lock the door with a touch



- ← Connects through Wi-Fi.
- ← 3" high-resolution, bright touchscreen.
- ← Prominently displays currently streaming music or tv source.
- ← One-touch access to your "Favorites."
- ← Sleek, aluminum body in black or silver finish.
- ← Frequently used buttons keep your eyes on the movie, not the remote.
- ← Weighted base charges Neeo and allows for quick pick-up when ready to use.

Hello Neeo!

A SMARTER REMOTE FOR THE SMARTEST HOME

Powered by Control4 Smart Home OS 3, Neeo lets you fire up a movie, binge your favorite TV show, or listen to your favorite playlist with one-button access to the channels, sources, and the smart home devices you use most. Replace multiple remotes and apps with the simplicity of a touchscreen. With the right mix of physical buttons, you can enjoy your entertainment without turning on various devices or switching a single input. Even control lights, locks, thermostats, and more!

Neeo is an effortless addition to your Control4 Smart Home. If you're already running OS 3, it can be easily added to your system. Simply order the Neeo remote from your pro and, once it arrives, connect it to your home's Wi-Fi and select the primary room where it will be used. Voilà! Your Neeo is automatically connected to your Control4 system.

Visit a Smart Home Professional today for your remote, speaker, or lighting demonstration: control4.com/dealer_locator

WHERE WERE YOU IN Y2K?

THE TIME THE WORLD
(ALMOST) ENDED

Elizabeth Kotz

THE UNIVERSE IS MADE UP OF STORIES, NOT OF ATOMS. TWENTY YEARS AGO, WE COULDN'T STOP TALKING ABOUT Y2K—THE INFAMOUS “MILLENNIUM BUG.” AN ABBREVIATION FOR “YEAR 2000,” IT ENCAPSULATED BOTH A TECHNICAL COMPUTER PROBLEM AND THE SOCIAL PANIC THAT EMERGED IN THE RUN-UP TO THE BALL DROP. THE NEW MILLENNIUM WAS FULL OF PROMISE AND PANIC IN EQUAL MEASURE.



1999

Let's go back to the year 1999. Only the birds were tweeting, and the “cloud” usually came with a forecast of rain. Mark Zuckerberg was a high school freshman; thefacebook.com was further away in time than his Star Wars-themed Bar Mitzvah party. We were living in the midst of a technological renaissance. High-profile innovations such as the mobile phone, personal computer, and internet were available to the public for the very first time. Although ARPANET, a computer network pioneered by the US Department of Defense, was built in the mid-1960s, it wasn't until the 90s that digital technology became mainstream.

“Move fast and break stuff” was the mantra of many pioneering tech startups. In 1991, the first website went live—by 1999, 150 million people were online, “surfing” from site to site. Coined in the 90s, the term “information superhighway” described how it felt to speed through pages of digital content. The excitement of getting music and videos online was bigger than the pain of waiting for everything to download at a snail's pace. We left our old, analog existence in the rearview mirror and never looked back. Beyond the pearly gates of cyberspace was a new world with untold possibilities.

The Y2K era was defined by the arrival of digital technology; even the creative pursuits of music, art, fashion, and design. Musicians like Bjork embraced computer-generated sounds, and high-energy electronic music genres like trance and techno became widely popular. In the late 90s we saw the emergence of a cyberpunk fashion aesthetic, exemplified by the hacker-chic looks in *The Matrix*. Sleek hairstyles, minimal color, trench coats, and boots were trends adopted by dance music lovers and early internet enthusiasts.

Technical garments featuring zippers, hoods, and water-resistant fabric) were emblematic of a culture prepared for the coming cyber apocalypse (or at least the next rave).

2000 held a sense of looming danger, however, especially for those who were aware of the implications. It was a “single point of failure” in that numerous systems could potentially break at the same time. Due to the early cost of computer memory, programs had been written using a two-digit year (assuming “19” for the century). This made sense as long as all dates were in the same century, but when the new millennium arrived and December 31, 1999, rolled over into January 1, 2000, it was possible that certain computer systems would think it was the year 1900 instead. This could cause mathematical processing errors of unknown proportions. To prepare, programmers across the world spent countless hours upgrading software and databases to handle four-digit years instead of only two, listing dates with the full “20” prefix.

As New Year's Eve drew closer, fears around the impact of the “Y2K bug” were still ramping up. Everyone wondered: would civilization crumble and chaos reign as planes fell from the sky? Was the digital world as we were beginning to know it about to collapse? Some people actually thought so. Those who worked in the field of IT were under pressure to develop “Y2K-compliant” programs before the January 1 deadline. The United States government even set up a website devoted to debunking Y2K rumors. Y2K jokes entered the cultural zeitgeist (a sign you're not Y2K ready? You've backed up your computer by pushing it against the wall!).

2000



I am acquainted with someone who built a log cabin in the woods and filled it with enough provisions to ride out the apocalypse. Everyone held their breath on New Year's Eve 1999, wondering if the world would end when the clock struck midnight. But cyberspace did not disintegrate, and aside from some minor glitches, preventive efforts to repair and replace existing programs were successful. While expensive (and impactful in the long run), it was an issue that quickly faded from the news. Thrilling and ultramodern technology products—MP3 players, cellular phones, digital cameras, GPS systems, and a variety of others—had taken over the spotlight. We feasted our eyes on ever brighter screens and better graphics. Everything was changing, fast.

Y2K did not stop the proliferation of instant messaging services, social media sites, blogs, and other online forums for communication. Chat rooms and message boards allowed people access to a breadth of connections they would not have found through former means. Search engines and web browsers gave users the sense that they were traversing a space without limits. There was a new sense of openness and optimism. Boundaries between the “cyber” and the real began to blur; our digital tools were acting as portals to a universe with an infinite number of possibilities. The Sims—a life simulation game that debuted in the year 2000—was one of the first games that gave users the ability to create a whole new identity on the computer. Creating an internet persona and portraying an idealized version of oneself online would become more and more important in coming years.

Dramatic advances in technology since Y2K have disrupted every aspect of our lives, from personal health and wellness to economics and finance. The launch of the iPhone in 2007 kick-started the mobile phone revolution. In 2020, smartphones are indispensable to the way people communicate, work, date, shop, and play. Access to real-time information is available to almost everyone at all times, changing how people spend both their time and attention. Older users make up the primary base of Facebook's social network, while children and teenagers are more proficient with digital technology than any generation in history.

Y2K revealed just how integral computers were becoming to our daily lives. It was a technological problem that showed governments, companies, and individuals the level to which our lives could be impacted if all screens suddenly went dark. When only a few systems were actually impacted on January 1, 2000, it was because of the quick work of computer-savvy professionals. After defeating the “Millennium Bug,” we entered the year 2000 armed with the confidence to continue building larger networked systems. This could be the most important legacy of the Y2K era: What happens online doesn't occur in a vacuum; our digital exploits have an impact on the physical, offline world. With more and more users connecting to the internet every day, the scope of what is possible for our society continues to expand beyond anyone's expectations. ■

AFTER DEFEATING
THE "MILLENNIUM
BUG," WE ENTERED
THE YEAR 2000
ARMED WITH THE
CONFIDENCE TO
CONTINUE BUILDING
LARGER NETWORKED
SYSTEMS.

YOUR HOME SIMPLIFIED



Life gets busy—but when your home technology is connected into one simple-to-use system, it helps take away some of those daily little stresses. A true smart home makes your life more convenient and your home safer, more comfortable, and easy to enjoy.

With Control4 Smart Home OS 3, every interaction is more meaningful.

CONTROL4.COM



©2020, Wirepath Home Systems, LLC. All rights reserved. Control4 and their respective logos are registered trademarks or trademarks of Wirepath Home Systems, LLC, dba "Control4" in the United States and/or other countries. Other names and brands may be claimed as the property of their respective owners. All specifications subject to change without notice.

STARTING SMART

MAKING YOUR HOUSE A SMART HOME

HOW TO INCORPORATE TECHNOLOGY INTO NEW OR PRE-EXISTING BUILDS.

When you hear the words “smart home,” your mind may go in several different directions ranging from a house alarm system to Amazon Alexa or automated lighting. A smart home offers convenience and safety and is also completely customizable as it can be built around your personal preferences, needs, and budget.

Getting Started

Building or transforming your space into a smart home starts with your needs and desires. Some homeowners may prefer to begin with convenience, such as automated lighting, while others may be concerned with security, so they’ll start with an alarm system. Either way, there is no right or wrong direction for the start of your journey; it’s all about your priorities and what is the most important to you and your family. The process can be very affordable when you start small and build in phases based on your budget.

First, you’ll need to start with a smart home controller. The controller will help all of your devices communicate and work together. As time goes on and your budget allows, you can add on *a la carte* smart home items such

as door locks, lighting controls, thermostats, and security cameras. Many new products are being created “backward compatible,” meaning they will work with existing products already on the market, so you don’t need to be continuously buy new products when you make an addition.

Infrastructure

In today’s world, most products are enabled with built-in Wi-Fi capability. Some products work on different protocols, like Zigbee and Z-Wave. For those products, the controller integrates into your wireless network, and your devices talk through the controller, which then turns into an internet signal that you can access from your smart device.

Infrastructure differs whether you are working on a pre-existing or new

build. Sometimes wireless is the only option in older homes, depending on when they were built and whether they have the necessary existing infrastructure. With a new build, you have free range to wire your home or office as it is being constructed, which is less expensive and a more natural process. When installing in a new build, it’s important to run more wire than needed so you can future-proof and install enough infrastructure to support future technologies, in addition to your current needs.

When you have a choice, a hard-wired connection is always the preferred option as it provides a more stable connection and a direct link to your network. Hard-wired connections do not use Wi-Fi, which eliminates the issue of products such

as security cameras using a ton of your wireless bandwidth, causing other devices like your smartphones or tablets to slow down.

Trends

The biggest trends this year include security and having a connected home. People want to make sure their loved ones are safe in either their home or office. They want to be able to monitor their personal space when they are not home and see when visitors are coming and going through smart door locks, alarm panels, and surveillance cameras, which are becoming very affordable and user friendly.

Another trend is audio, as consumers increasingly want to use voice activation to control their devices. It’s essential to rely on an

expert to help make sure the products you choose have audio capability and work together, which eliminates unnecessary extra steps. People like the convenience of being able to say, “Hey Alexa, let’s party,” and have the lights turn on to a preset scene, the door unlock for guests, music start to play, landscape lighting illuminates, and more.

Building a smart home may sound intimidating and costly, but it doesn’t have to be. When you are building your dream smart home, it is vital to work with an integrator who is a trained professional and will make sure all of the smart devices work together at their maximum potential, eliminating any frustrations and headaches. ■



Our “Starting Smart” series comes from Christopher Sterle, founder of Acoustic Design Systems (ADS), a Las Vegas-based leader in commercial and residential home automation and security solutions. ADS provides custom-designed solutions to fit every lifestyle. ADS specializes in integrating smart technology driven by artificial intelligence, RFID, voice control, and facial recognition that enable connectivity throughout the home or office—from singular solutions to complete infrastructure. Sterle is an active member of CEDIA, CEA, TechHome Builder, Southern Nevada Home Builders Association, the Better Business Bureau, Henderson Chamber of Commerce, NAIOP, and ASID and is THX Installer Certified.

STARTING SMART

WHAT TO EXPECT WHEN WORKING WITH A SMART HOME PROFESSIONAL

WHEN YOU DECIDE TO EITHER BUILD OR TRANSFORM YOUR HOME OR OFFICE INTO A SMART HOME, IT'S ESSENTIAL TO WORK WITH A TRAINED AND EXPERIENCED PROFESSIONAL. HIRING THE RIGHT INTEGRATOR WILL NOT ONLY SAVE YOU TIME AND MONEY, BUT ALSO HEADACHES AND HASSLES.

To start with, you will need to do your homework. First, ask friends and family for referrals, and check out online reviews, both the good and bad. References are usually a great resource, as they have already provided a successful service to people you personally know. Once you've done the research, reach out to the integration company you prefer. Take your time during the vetting process and meet with multiple integrators until you find one you are comfortable with.

The Process

A smart home professional will want to begin by setting up an appointment to learn more about your lifestyle and determine your list of wants and needs. Budget will also be a vital aspect of the initial conversation as you discover the scale of the project you want completed and whether you will be doing several upgrades and changes at once, or if you prefer to make additions over time.

After the professional has all of the initial information they need,

they will make product suggestions and detail a plan that achieves your goals and is in line with your budget. Be sure to speak your mind and address any changes you want to see. Every smart home system is entirely customizable, so thoroughly explain what you want to achieve. Once decisions have been made, you will be provided with a complete scope of work reiterating what was agreed upon, a line-by-line itemization of parts and products, and an explanation of how they all work together to suit your needs.

The next step will be scheduling an installation for the company to install the system. Once completed, the smart home professional will train and educate you on each product and its capabilities, showing you how to use everything. Be sure to speak up and

ask any questions you may have, even though more may come up as you get used to the new technology.

Continued Relationship

It's important to choose a company that offers a service contract and provides immediate assistance with any questions or concerns you may have. You'll also want to become friendly with the chosen company so you feel comfortable and confident to call them at any time to discuss new products or projects you may be interested in. That way, you can build and add to your smart home as technology changes.

You could just go online and pick out popular smart home products and read the instructions on how to install them yourself. But you will likely find DIY solutions cause

more frustration than necessary, and the intended connectivity may not function properly as you had planned. When you hire a professional, you're employing an educated expert. Respected integrators are continuously furthering their education to learn more about their industry, be on top of evolving technology, and remain masters in the field. ■



STARTING SMART

WORKING IN PHASES WITH LIGHTING AND AUDIO

WHEN IT COMES TO SMART HOMES, NOT ALL UPDATES NEED TO BE DONE AT ONCE. PROJECTS CAN BE COMPLETED STEP BY STEP AND IN PHASES, ESPECIALLY WHEN IT COMES TO LIGHTING AND AUDIO. BASED ON YOUR NEEDS AND BUDGET, IT'S UP TO YOU WHERE YOU START AND HOW MANY SOLUTIONS YOU WANT TO AUTOMATE. YOU CAN START SMALL WITH ONE ROOM OR TRANSFORM AND CONTROL YOUR ENTIRE HOME—THE OPTIONS ARE ENDLESS.



Lighting

Automating your lighting controls provides many benefits, such as convenience, energy savings, updated design, and complete personalization.

There are multiple options when it comes to lighting, including Wi-Fi enabled lightbulbs that allow you to change its brightness and color using a mobile app. As you begin to increase the number of controllable lighting loads in your house or office, you can start introducing keypads such as a multi-button light switch that allows you to set up different scenes for each button on a single light switch. For example, your keypad may have one button that

is specific to activating a “Movie Night” scene that dims the lights, a button for a “Wake Up” scene that gradually increases the brightness of fixtures and an “Entertain” button that activates specific lights and music in designated rooms.

For safety purposes, consumers in today’s world prefer to have access to lighting controls remotely, so they can turn lights on and off when they are not home. You can also program individual lights to turn on when specific doors open, so you are never walking into a completely dark house.

When it comes to utilizing the natural lighting in your home, why not make it convenient, as well? Another growing trend, automated

shades, allows you to control the natural light in each room from your smart device. Not only can you raise or lower them with a click of a button, voice automation, or RFID, but you can also set various lighting “scenes” to your preference for certain times of the day.

The programmable options are endless when all of your devices are communicating in a symphonic way, and the decorative light switches are customizable to fit your style, so as to not distract from your aesthetic design.

Audio

The right audio system is another key aspect for many homeowners when designing their smart home.

Similar to lighting controls, you can start with integrating audio into just one room, or you can transform your entire house.

Are you a music lover? Smart home audio can combine all of your audio components into one easy-to-use control app that can be played through built-in speakers in any room throughout your home and even outdoors. You can pick and choose what you want to hear and which room you want to hear it in. If you’re cooking in the kitchen, you can turn on a specific playlist, song, or artist. If you have family and friends over, you may want a particular genre of music playing in the backyard and then something different playing in

the game room. With smart home audio integration, that can all be possible with the touch of a button from your control app or smart device, and even with voice control, as well.

It’s imperative to rely on an expert when you are thinking of automating your lighting and audio, as the expert can ensure all devices work together and streamline the process. With fully customizable options, it’s essential to pick the right products to achieve your specific goals based on how you relax and entertain at home. ■

TANTALIZING TECH FACTS



1) **What company's first...**
unofficial motto was, "Don't be evil"?



2) **Name one of the two...**
first social media networking sites.



3) **Who said it?**
"Your time is limited, so don't waste it living someone else's life."



4) **What year and in what state...**
did the first documented geocache take place?



5) **The first toy...**
to be advertised on television was?



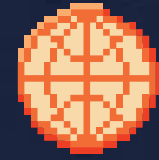
6) **What game console...**
manufacturer released two scratch-and-sniff discs?



7) **In what city was...**
the first cell phone call made?



8) **What is the most viewed...**
music video on YouTube of all time?



9) **What country has the highest...**
number of internet users?



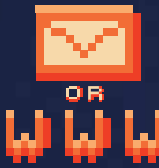
15) **What material was the first...**
mouse made out of?



10) **What do...**
HP, Google, Microsoft, and Apple all have in common?



16) **What year was "The Computer"...**
named TIME Magazine's "Man of the Year"?



11) **What came first?**
Email or the World Wide Web?



17) **The original Atari...**
football game was created in 1973, but when was it finally released?



12) **How quickly are...**
95% of text messages read?



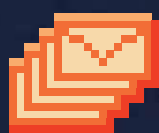
18) **What was the first...**
digitally operated robot's name?



13) **True or False?**
92% of the world's currency today is digital.



19) **What is the top speed...**
of the world's fastest typist?



14) **Fill in the blank.**
_____ billion emails are sent each day.



20) **How many apps...**
does the average person have on their phone?

Answers: 1) Google; 2) Friendster and Six Degrees; 3) Steve Jobs; 4) 2000 in Oregon; 5) Mr. Potato Head in 1949; 6) Sony PlayStation; 7) New York City; 8) "Despacito," with 6.61 billion views; 9) China, with over 746 million users; 10) all started in a garage; 11) email; 12) within 90 seconds; 13) true; 14) 205; 15) wood; 16) 1982; 17) 1978; 18) Unimate; 19) 212 WPM; 20) 80+.

Sources: 1) CNN the 2000s; 2) HistoryCooperative.org; 3) Goalcast; 4) Geocaching.com; 5) CNYNews.com; 6) TheThings.com; 7) TheFactSite.com; 8) Digital Trends; 9) World Atlas; 10) Globallead.com; 11) EconomicTimes.com; 12) TextRequests.com; 13) PriceofBusiness.com; 14) MyTipros.com; 15) TheFactSite.com; 16) Globallead.com; 17) Electronics.howstuffworks.com; 18) Thoughtco.com; 19) Daskeyboard.com; 20) Businessofapps.com.



TRENDING TECH FOR TRAVELERS

Lisa Montgomery

TRAVEL CAN BE A REAL HASSLE. WHETHER YOU'RE ON THE ROAD FOR BUSINESS OR LEISURE, THERE'S BOUND TO BE SOME SORT OF HICCUP ALONG THE WAY. THANKFULLY, A HOST OF INNOVATIVE NEW TECHNOLOGIES CAN RELIEVE SOME OF THE STRESS AND MAKE TRAVELING A BREEZE...OR, AT LEAST A BIT MORE BEARABLE. FROM APPS THAT ENSURE YOU'VE PACKED APPROPRIATELY TO DEVICES THAT PROTECT YOUR BELONGINGS FROM THEFT, TECHNOLOGY FOR THE TRAVELER IS TRENDING. HERE ARE SOME OF THE SMARTEST ADDITIONS YOU MAY WANT TO BRING WITH YOU ON YOUR NEXT JOURNEY—THEY JUST MIGHT MAKE YOU FEEL AS THOUGH YOU'RE ALWAYS FLYING FIRST CLASS.



SMART SUITCASE

There is so much more you can do with a suitcase than stuff it with clothing. You can find carry-on luggage with removable USB chargers from several manufacturers, including Carry-On and Samsara. Rest easy, as you'll no longer need to search the terminal for a free wall outlet to charge your phone. Your charger is right there when and where you need it. You can also find smart suitcases with built-in LED lights, just in case you need to get at your belongings in a dark environment, and sensors that let you track the movement of the suitcase from a mobile app.



LOCATION TRACKER

It's easy to get distracted and leave something behind at an airport, bus terminal, car rental, hotel—really anywhere your travels may take you. A tracking device like Tile can be a huge lifesaver when something turns up missing. Attached to your purse, wallet, keys, carry-on bag, or other precious cargo, the sensor transmits its location directly to a smartphone app. Whether you've left your wallet at the food court or your keys at the security check, a device like Tile can point you in the right direction.

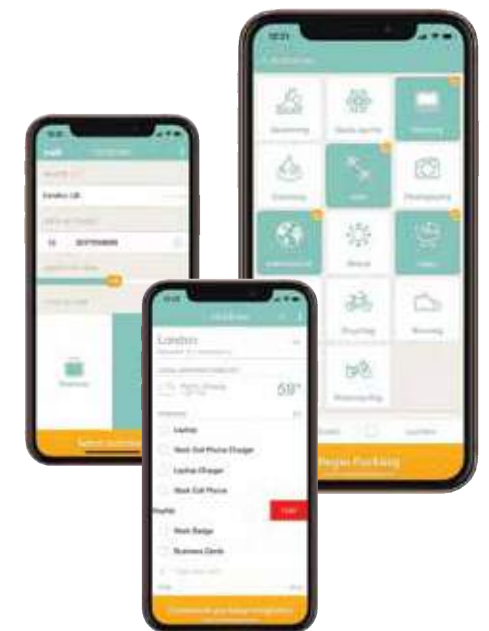
UNIVERSAL POWER ADAPTER/ CONVERTER

Nothing beats a universal travel adapter/power converter for international travel. You'll always have the correct outlets for your worldwide adventures with no worries about frying your gadgets. Many adapters are designed for 110-volt devices only, so they're best for charging phones, tablets, cameras, and other small mobile electronic devices—not high-powered appliances like hair dryers. Loaded with multiple connectors, you'll be able to charge all of your handhelds at once. If you do plan on bringing a blow dryer, curling iron, or other high-powered devices, you can find adapters that can handle both duties.



RFID-BLOCKING WALLET OR PURSE

RFID technology has simplified travel by enabling your passport to be quickly scanned. It not only speeds up the check-in process, but lets you pay for tolls and facilitates contactless payment via credit cards. Unfortunately, this simple, speedy, all-digital method of reading your identity and contact information can also put you at risk. RFID scanners enable cybercriminals to pick up credit card numbers, expiration dates, and CVV codes from passersby...but not when carrying your RFID information in a special RFID-blocking wallet or purse. Containing a layer or wrapping made from carbon fiber or metal, they block the electromagnetic fields from reaching your cards that have RFID chips embedded in them. The chances of having your information stolen may be slim, but why risk it when the solution is so simple?



PACKING APP

You can have the smartest suitcase in the world, but if you pack the wrong attire, your entire trip could be ruined. A free app like PackPoint puts together a list of recommended items based on the type of trip you're taking (business or leisure), your destination (is rain expected?), your gender, length of stay, and other variables. After analyzing the data, the app automatically compiles a list of things you should toss into your bag. Of course, you can always modify PackPoint's suggestions, like packing two pair of sandals instead of one pair or bringing your raincoat, just in case. ■



ABT ELECTRONICS



PERFECT SHADE AND SOUND

TECHORATING TRENDS: START IN A SHOWROOM

Danielle Karr

It is estimated that there will be over 12 billion smart devices in homes around the world by the end of 2020. While technology is exciting, many homeowners also feel overwhelmed by the new technology choices available to them. Until recently, technology has generally been seen as a gadget to add into the home after design is complete; however, home technology has evolved, and homeowners now have more options than ever before. Motorized cabinetry allows those with physical limitations to reach objects from above, kitchen countertop surfaces feature built-in mobile device charging capabilities, app-connected residential *sous vide* ovens are becoming more and more popular with home cooks, mirrors double as TVs, and TVs double as beautiful artwork. And, while some of the emerging technology is still a little gadget-y—like a smart salt shaker—the big question many homeowners are asking today regarding whole-home technology is:

WHERE DO I START?

The answer: start in a showroom.

It's best to begin where you can experience the technology for yourself. Many smart home professionals have beautiful showrooms filled with live technology demonstrations. For example, a Control4 Certified Showroom can demonstrate everything from setting custom scenes to connecting favorite devices into one easy-to-use system. If you bring your ideas to a professional early on for a project, they can work with you to create a smart home that is comprehensive, reliable, and customized to your wants and needs.

EXPERIENCE A SMART HOME OS

One of the first things a great showroom will demonstrate is the need for a smart home operating system to pull all the technology in your home together. A smart home operating system (OS) expertly connects virtually all technology in the home. It can unify hundreds of connected devices through a single platform for quick and easy control of all home tech. A smart home OS supports and controls products across all categories of electronics, appliances, and systems in the home.

For example, the Control4 Smart Home OS 3 integrates with thousands of different technology devices and services in the home, including:

- Connected appliances
- HVAC control
- Electric blinds & shades
- Smart lighting
- Security cameras & systems
- Video doorbell & smart locks
- Universal remotes
- Multi-room music and video
- Home theater and audio control
- Sprinkler systems and pool controls

Smart home OS design is particularly important when you want to have multiple ways to access the technology in your home. Once the technology is installed and the core programming is finished, your Smart Home Professional will teach you how to manage and personalize your smart home OS to ensure you know how to access and control devices, adjust presets, and create automated scenes.

A certified showroom is the perfect place to experience for yourself the magic of a smart home and continue learning about new options and upgrades as they become available. ■



ASHWAY SMART HOME

WORLD OF WONDER

Crystal Watts

A 200-YEAR-OLD TOWNHOUSE IN A QUINTESSENTIALLY ENGLISH MARKET TOWN HAS BEEN TRANSFORMED INTO A STUNNING QUARTET OF LUXURY SUITES THAT TRANSPORT GUESTS TO THE FOUR CORNERS OF THE WORLD THROUGH A CREATIVE MIX OF ART, DESIGN, AND STATE-OF-THE-ART SMART TECH.



SMART HOME PROFESSIONAL:
Majik House

PROJECT LOCATION:
Kirkby Lonsdale, England



Kirkby Lonsdale (pronounced “curb-E”—the second ‘k’ is silent—those tricky Brits!) is a small, ancient market town in the north of England, nestled between two of the country’s most stunning national parks—the Yorkshire Dales and the Lake District. The town is peppered with unspoiled historical buildings and landmarks, as well as an array of exceptional independent shops and small businesses, most of them owned and run by locals. It is, in short, the epitome of Englishness.

Step inside the delightful, three-story Victorian townhouse at number 4 Main Street, however, and you will be swept across the globe to Africa, the Far East, Europe, and the Americas. AbsoluX Suites is a unique getaway retreat themed around the four corners of the world—and an exemplary showcase for exquisite design, luxury interiors, and state-of-the-art smart home technology.

The suites were the brainchild of Kirkby smart home tech specialist Majik House (run by husband-and-wife team Tim and Carol Burrow) and luxury bathroom supplier Aquajade, another Kirkby business (run by their friends, Zuzi and Phil Armstrong).

Despite being very much a local initiative, it was fittingly conceived during a trip overseas. “We do a lot of mutual client referrals, as we’re located in the same business park, serving a similar base of residential customers,” says Majik House business director Carol Burrow. “Two years ago, the four of us went on a short culinary break to Lyon in France. Over a few bottles of wine, we decided there must be a better way to bring our two businesses together and show off what we do.”

THE ORIENT

YOU WILL BE SWEPT ACROSS THE GLOBE TO AFRICA, THE FAR EAST, EUROPE, AND THE AMERICAS. ABSOLUXE SUITES IS A UNIQUE GETAWAY RETREAT THEMED AROUND THE FOUR CORNERS OF THE WORLD



AMERICAS

And so, the idea of a new hospitality joint venture was born—Absoluxe Suites. “We figured that not only could we create a unique retreat for anyone seeking a taste of luxury, but it could also double as a showcase for our clients, where they could spend a night trying out the latest smart technology in a luxury setting to help them decide what they might want in their own homes. That’s very different to spending two hours in a showroom pressing buttons,” says Carol.

On their return, they set to work on realizing the idea, drawing on Kirkby’s close-knit business community to secure and transform the impressive limestone townhouse. Carol says: “We knew the former owner of the building—which was most recently used as a hair salon—and we managed to do a deal with him even though it wasn’t on the market. There hadn’t been any major work on the place for more than 20 years, and it had to be completely gutted, although we’ve retained notable original features such as the stained glass, decorative coving on the staircase, and archways above the internal doors— all of which we’ve since highlighted.”

PARIS

THERE ARE USUALLY GASPS WHEN PEOPLE WALK ROUND FOR THE FIRST TIME. THE DESIGN HITS THEM FIRST.



Using various local professionals they'd worked with on previous installations, they spent the next 12 months having the building rewired, replumbed, re-plastered, and reroofed, as well as changing the position of some internal walls.

Meanwhile, Tim and Carol gave Majik House's marketing and events specialist Sally Proctor—who also happens to be a qualified artist—free reign with the design. "Despite my art background, this was my first time dabbling with interiors. Tim and Carol wanted each room to be individually themed, gave me a budget, and just let me get on with it," says Sally.

After playing around with a few ideas, she hit on the "four corners of the world" theme. The quartet of suites would take their look and feel from, respectively, Africa, the Orient, 19th century Paris, and Christopher Columbus's discovery of the Americas. "That fit really nicely, because I wanted an overarching connection that would still let us play with different styles and be a bit experimental in every room," says Sally.

After sketching out the designs and settling on color schemes, she set about sourcing (and creating) pieces for all the suites. "I had a real image in my head of what I wanted to create and managed to find 95% of what I needed, both online and through another local company that had just opened," she says.

She also made her own bespoke artwork for each suite and the hallways, such as the elephant portrait which formed the inspiration for the African-themed Oasis suite on the ground floor. This is the largest of the four suites, featuring décor that evokes the lush green canopy of the African Congo, a dedicated luxury media lounge, and an outdoor terrace with a top-of-the-range hot tub from Aquajade.

Carol Burrow says: “There are usually gasps when people walk round for the first time. The design hits them first. Most people say entering the Oasis is like walking into a spa. The technology, though, is much more subtle. When they arrive and tap in the door entry code for their suite, the lighting comes on, along with music appropriate to the theme of the suite—so when they enter, it almost feels like it’s alive.”

The subtle tech is largely down to Majik House founder and Control4 Smart Home Professional Tim Burrow. With discreet, easy-to-use Control4 technology at the heart of the system, Tim can ensure guests are always delighted and the tech’s never intrusive. “Everything is integrated fully into the fabric of the building, so there are no cables visible. The only visible tech is the screens, which are mostly flush to walls and positioned so they’re not the central focus of the room,” he says.

Powerful Pakedge wireless networking is used as the backbone of the network, providing each suite with its own internal wireless network as well as fast Wi-Fi internet access. Control4 technology gives guests in all the suites simple control over lighting, heating, TV, radio, music, window blinds, CCTV, and security. “They can access and control everything simply and intuitively via an on- screen display. All we have to say to them is ‘Press the red 4 on the remote control’ and they’re guided through. Control4 has never let us down,” says Tim.

Carol adds: “I always give the remote to women guests, because nine times out of ten they say they’re no good with technology. Then they press the red 4, a screen comes up straight away, and very quickly they have it all mastered. When they leave, many comment in the guest book or on TripAdvisor about how much they love the tech,” she says.





But she doesn't think it's surprising that some guests are initially wary. "We've stayed in a lot of supposedly high-end hotels ourselves where the technology has been atrocious and leaves you really frustrated. That never happens here. Control4 technology is so easy to use, it's a delight," she says.

Also, on the ground floor is the smallest and coziest of the four suites, The Orient. This was originally two lean-to sheds but was completely rebuilt for the refit. It has its own private entrance through the stone archway that leads to the rear of the building, as well as another

hot tub. Sally says the suite was inspired by not one but several Far Eastern countries—the bold colors of China, the traditions of Japan, and the cultural essence of Thailand, giving it a distinct sense of Zen-like calm. "The Orient creates a harmonious balance, perfect for relaxation," she says.

On the second floor, the Parisian suite has an altogether softer, more feminine feel, with its 19th century styling inspired by French impressionist art—complete with decadent chandeliers, velvet-upholstered carved bed, traditional French-style bathroom suite,

and luxurious free-standing copper bath, along with wonderfully quirky touches like the French station-clock table in the bedroom.

Finally, the top floor houses the Columbus suite, which combines Americana, such as a distressed leather sofa with stars-and-stripes cushions, with nautical motifs like the ship's wheels on the bedroom wall and the vintage telescope pointing out to the suite's stunning views over the Yorkshire Dales.

All of the suites ooze luxury, with super-king-size beds and top-quality linens, fabrics, and soft furnishings throughout,

EVERYTHING IS INTEGRATED FULLY INTO THE FABRIC OF THE BUILDING, SO THERE ARE NO CABLES VISIBLE.





ABSOLUXE SUITES IS ALSO HELPING TO SHINE A LUXURIOUS LIGHT ON THIS LITTLE-KNOWN CORNER OF ENGLAND.

themed according to the suite. Tim has even created custom lighting scenes to imbue every suite with the right atmosphere for for any occasion, for example, welcoming guests or chilling out. Again, these can all be accessed easily from the Control4 remote.

Since opening in April 2019, Absoluxe Suites has had a steady stream of guests —mostly couples within a two-hour drive seeking a few days of luxury, although they’ve also had a number of potential clients and a handful of overseas tourists stay.

And while the suites were inspired by the four corners of the world, Carol and Tim are firmly committed to their local community. “There are natural spin-offs for lots of businesses in Kirkby. For example, we don’t do food, but we have a great relationship with the five-star hotel next door, and guests can be at a restaurant or bar within half a minute. We also use lots of local companies for things like laundry, luxury chocolates, and hand-made toiletries,” says Carol.

Absoluxe Suites is also helping to shine a luxurious light on this little-known corner of England. “More often than not, guests don’t know Kirkby Lonsdale before they stay with us—they’re drawn here solely because they’ve seen the suites online,” says Carol. “But once they get here, they fall in love with the town, too.” ■

A DRIVING FORCE
THAT'S ROLLING FIERCE

TRUST US—
YOU'LL WANT TO
BE A BACKSEAT
DRIVER ON
THIS THRILLING
JOYRIDE.

Crystal Watts

THE VICEROY BOASTS THE STRONGEST CIVILIAN-GRADE
BULLET-PROOFING OFFERED (B7 PROTECTION LEVEL) AND IS CAPABLE OF
WITHSTANDING HIGH-VELOCITY RIFLE AND SNIPER RIFLE SHOTS.

PHOTOGRAPHY: COURTESY OF LEXANI MOTORCARS



SMART HOME PROFESSIONAL:
C&R Systems

PROJECT LOCATION:
Los Angeles, California



LEXANI MOTORCARS' ULTRA-LUX EXTENDED CADILLAC ESCALADE VICEROY EDITION VOWS TO MAKE EVEN THE MOST SEASONED TRAVELER'S LIP QUIVER. COMING IN HOT (AND BULLETPROOF) AT NEARLY 23 FEET, IT DWARFS ITS PREDECESSORS; THOUGH IT'S WHAT'S BEHIND CLOSED DOORS THAT MAKES THIS BESPOKE SET OF WHEELS WORTHY OF AUTO-ENTHUSIAST CHATTER. FROM ANY TYPE OF PERIPATETIC—HOLLYWOOD SOCIALITES, BUSINESS MAGNATES, AWARD-WINNING ARTISTS, OR WORLD-CLASS ATHLETES—THERE'S A LITTLE (OR A LOT) OF SOMETHING FOR EVERYONE.

WORK [in progress]

- **VIP mobile office with a Mac Mini processing powerhouse**
- **Video conferencing**
- **Sprawling interior layout**
- **Diamond-stitched European leather seats**
- **Airline-style tables**
- **Security system**

PLAYING [it cool]

- **Control4 smart operating system**
- **Vivid LED starlit ceiling**
- **Playstation gaming console**
- **Apple iPad Pros with magnetic charging docks**
- **Curved smart TV with proprietary partitioning**
- **Video streaming**

LIVING
POSH

N

POLAND

MODEL APARTMENT BOASTS AUTOMATION
FEATURES BOTH INSIDE AND OUT, BRIDGING
ITS INTERIOR WITH EXTERIOR AMENITIES.

SMART HOME PROFESSIONAL:
Synergy Polska

PROJECT LOCATION:
Warsaw, Poland



Lisa Montgomery

It's one thing to consolidate the technology of a home under the control of a single, unified home management system. It's quite another to also integrate into this platform the electronic systems of an entire 52-story apartment building. This is exactly what the home systems integration team from Poland-based Synergy Polska was able to accomplish beautifully through the meticulous design and installation of the Control4 automation system, proving that one automation platform can serve the needs of both residential and commercial clients.

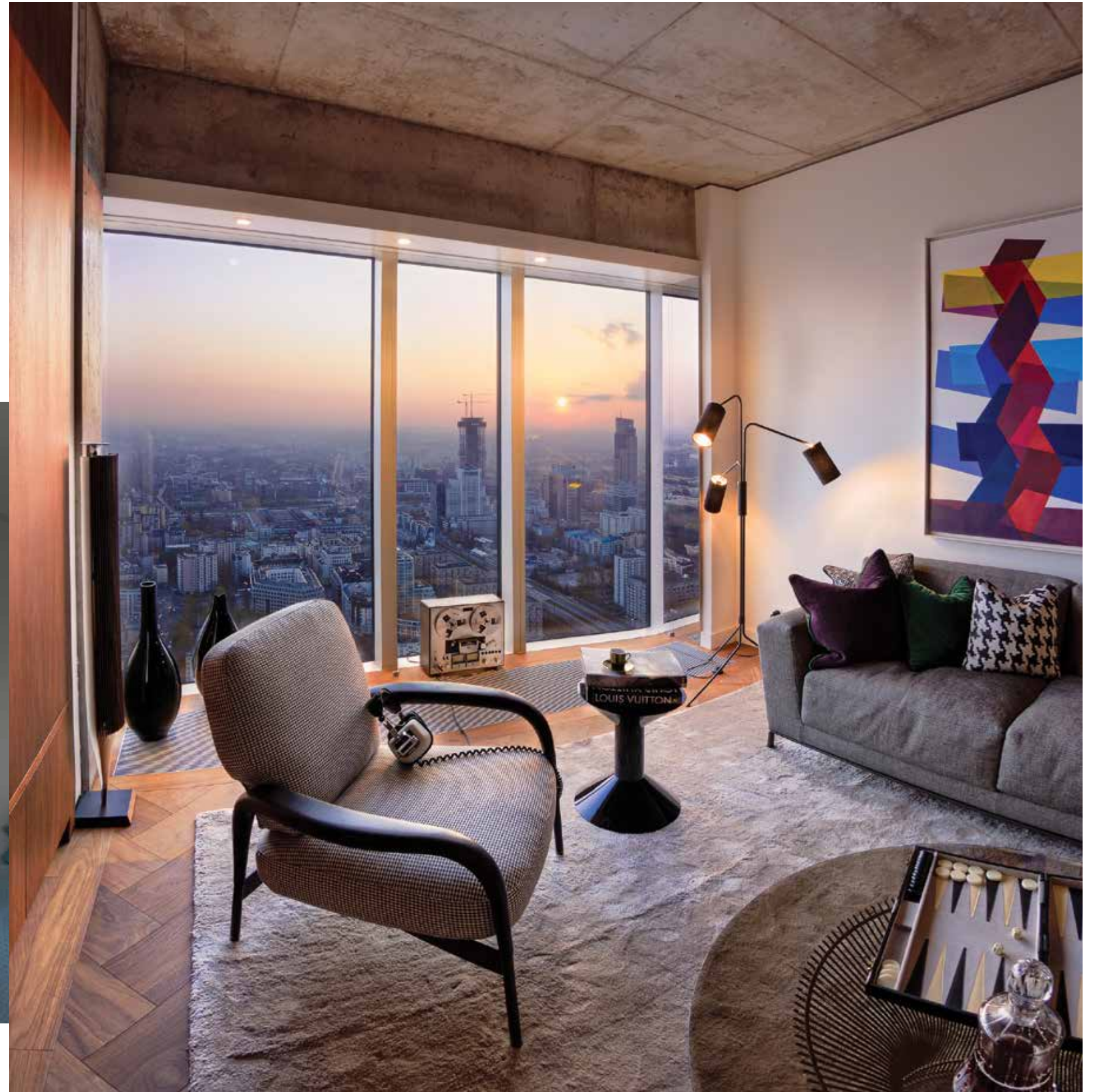
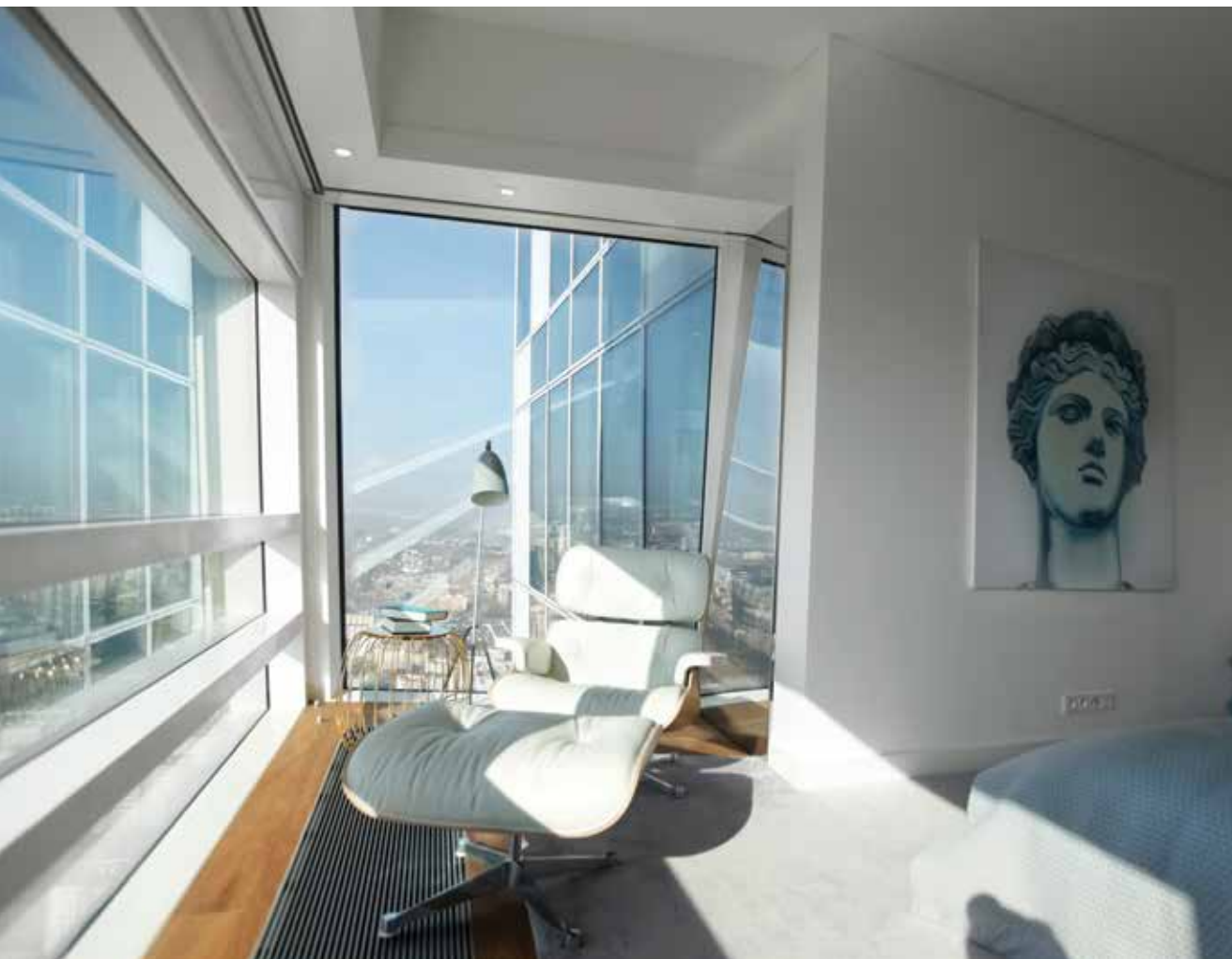
The Control4 system, installed in the prestigious ZŁOTTA 44 tower recently constructed in the city of Warsaw, spans from a luxury apartment on the 50th floor to the reception area on the main level, introducing the apartment occupants to a whole new standard of comfort and convenience. They maintain full command of a host of electronic components inside their dwelling and can also connect to and communicate easily with a wide range of systems and services accessible outside of their flat.

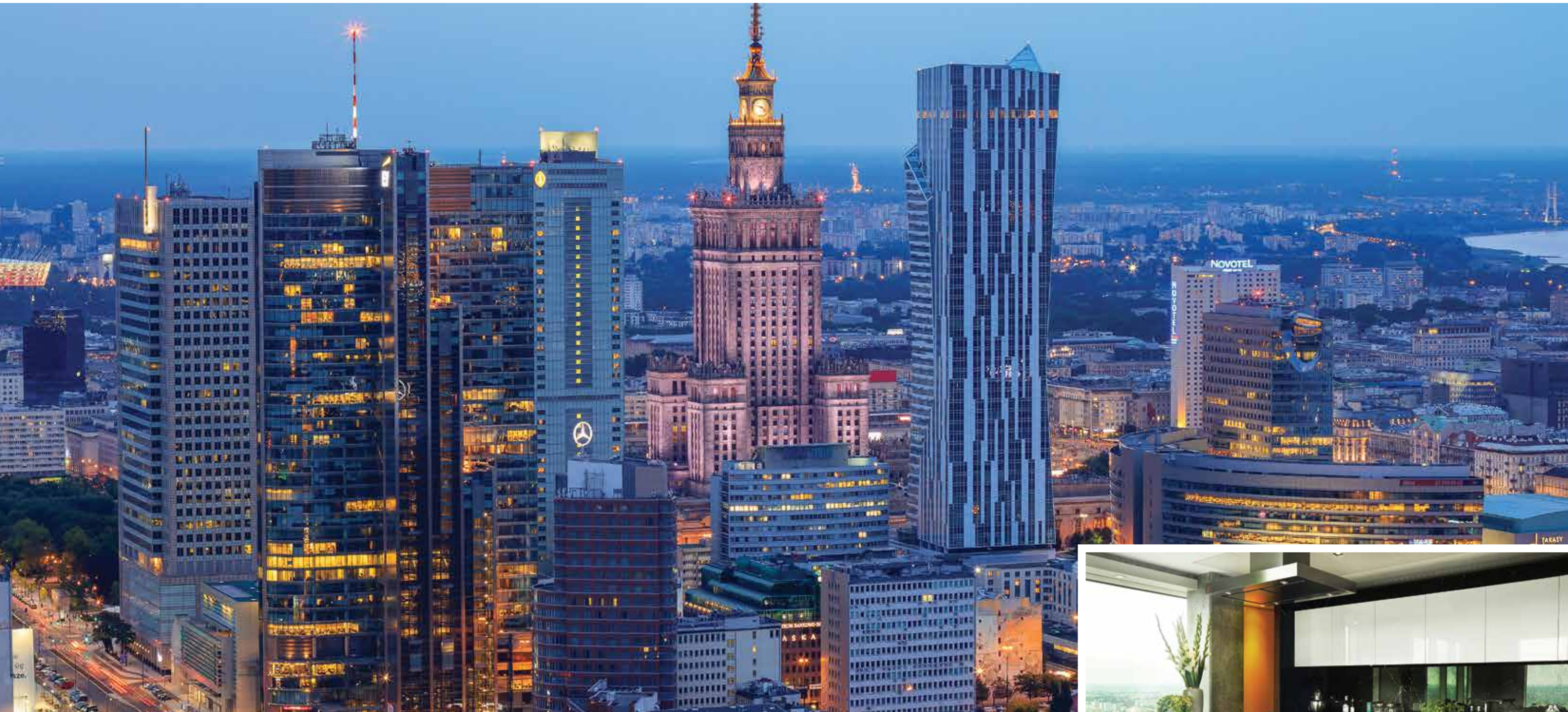
ZŁOTTA 44 TOWER, RECENTLY CONSTRUCTED IN THE CITY OF WARSAW, SPANS FROM A LUXURY APARTMENT ON THE 50TH FLOOR TO THE RECEPTION AREA ON THE MAIN LEVEL.

PHOTOGRAPHY: COURTESY OF SYNERGY POLSKA



The apartment, which functions as a model home for real estate agents to showcase the luxurious architecture, innovative construction, and state-of-the-art technology of ZŁOTTA 44 to prospective home buyers and renters, features a full array of automated amenities. Buyers are able to see a full range of smart products in action, allowing them to envision how a Control4 system can deliver convenience, comfort, and enjoyment to their own modern lifestyles—a huge benefit to professionals who work and live in the heart of the bustling metropolis of Warsaw. “The system we installed, configured, and designed is a reliable and attractive platform on which to present Control4 system capabilities, allowing customers to feel like they’re home before they move in,” says Synergy Polska’s Krzysztof Bak.





The smart systems also complement the apartment's unique aesthetic, designed by prominent architect Daniel Libeskind, as well as its eco-friendly construction standards that maximize energy efficiency and minimize the busy street noise from disrupting the peaceful home environment. "Businessmen who spend

a large part of the year in Warsaw crave serenity and privacy when they're not working," Bak says. "These features evoke the perfect atmosphere for rest and relaxation." Motorized window blinds, smart lighting, intelligent thermostats, heated flooring, and audio/video components are all managed in this showcase apartment by a Control4 system,





DESPITE THE COMPREHENSIVE UTILIZATION OF THE CONTROL4 SYSTEM, ITS OPERATION REMAINS COMPLETELY TRANSPARENT AND SEAMLESS TO USERS.



which Synergy Polska programmed to launch a variety of scenes at the touch of a button. “These scenes may launch fairly standard functions today for demonstration purposes,” says Bak, but it still gives visitors a good taste of what’s possible through home automation. “What really makes this project special, though,” Bak continues, “is the tight integration of multiple systems located elsewhere in the apartment building.”

By “elsewhere,” Bak is referring to the creature comforts available to occupants of the building’s 287 individual, uniquely designed apartment units. From a Control4 interface on a touchscreen or mobile device, a user can call for the elevator, access the reception desk to order a lift, conduct video calls with the apartment receptionist, message maintenance crews and other apartment residents, and communicate with guests at the main entrance. While these scenarios are initiated by the users of the Control4 system, other scenes unfold without any human interaction whatsoever. For example, when sensors mounted to the exterior of the apartment building detect strong winds, it signals the Control4 system to close all of the apartment’s windows.



WHEN EXTERIOR SENSORS DETECT STRONG WINDS, THE SMART HOME SYSTEM SIGNALS TO CLOSE THE WINDOWS.

This unique blend of commercial and residential solutions delivers real value both to the building developer and apartment owners. Through the Control4 system, the property managers of the property managers of ZLOTTA 44 are able to monitor and gauge overall energy use, provide their high-profile customers with white glove services, attract new residents, and retain existing residents. The dwellers of the automated apartment, meanwhile, are able to maximize their investment of a luxury dwelling through the use of automation features and easy access to unique, high-caliber customer services. “The flat provides a sense of personal control and at the same time is an integral part of the building and surrounding environment,” Bak says. Despite the comprehensive utilization of the Control4 system, its operation remains completely transparent and seamless to users. Expertly designed, engineered, and installed by Synergy Polska, it functions as a natural extension of the apartments and the entire building. ■

Get more information at www.zlota44.com

SMART HOME PROFESSIONAL:
INtech SYSTEMS

PROJECT LOCATION:
Haslet, Texas



ROAD WARRIOR

Lisa Montgomery

AUTOMATION SYSTEMS ARE CRAFTED FOR THE HOME, MANAGING THE LIGHTS, THERMOSTATS, AND AV EQUIPMENT SO THAT YOUR LIFE IS SIMPLER AND MORE ENJOYABLE. WHILE HOME MAY BE WHERE THE HEART OF AN AUTOMATION SYSTEM USUALLY RESIDES, IT ALSO TRAVELS WELL. REALLY WELL, AS THE OWNERS OF THIS 40-FOOT LUXURY RV DISCOVERED.



This home-on-wheels has all the creature comforts of home, including four ample-size TVs, streaming music, and surveillance cameras strategically positioned to provide a glimpse of the exterior of RV without having to step a foot outside.

Designed and installed by the smart home professionals at INtech SYSTEMS, of Haslet, Texas, the Control4 system and connected AV and security equipment is nothing new to the owner and his family. They live with the conveniences of smart lighting and climate control every day in their home. It wasn't much of a stretch—at least from a user's standpoint—to incorporate the same mode of control in their

luxurious RV. The only real difference was the techniques employed to run the necessary wiring, notes the INtech SYSTEMS team.

The operating system, Control4 Smart Home OS 3, runs on a controller tucked neatly into a storage compartment and enables the family to easily direct entertainment content from an Apple TV media player and DirecTV satellite receiver to four TVs. A quick tap of the Control4 app on a mobile device or a button on a Control4 remote is all it takes to watch a favorite series, YouTube video, or view selected surveillance cameras on any or all of the TVs located in the main cabin area, bedroom, above the driver's seat, and outside built into the side of the RV.

Streaming music is another option, supported by the RV's integrated LTE modem and Wi-Fi router. No matter if the RV is parked or cruising the open road, the Control4 system sets the pace, delivering entertainment, security, and easy control—all with a few taps of a button. These extra features truly make this RV feel like a "home away from home." ■



CREATE A BRIGHTER BACKYARD

Joni Wittenbach

WHEN PLANNING YOUR NEXT SMART HOME PROJECT, WHY LET YOUR LIVING ROOM HAVE ALL THE FUN? CREATE A PICTURE-PERFECT PATIO, PORCH, OR DECK THAT LEADS TO MORE TIME SPENT UNDER THE SUN AND STARS. WITH SOME OF THE LATEST WEATHER-READY TECHNOLOGY PIECES, YOU CAN LOOK FORWARD TO EASY OUTDOOR ENTERTAINING FOR YEARS TO COME.



A FIREPIT THAT'S MORE THAN LIT

Nothing brings people together like a roaring fire. We are drawn to the blaze of firelight for the same reasons our ancestors were—to cook food, share warmth, and come together with our friends and family.

Contemporary “smart” fireplaces provide an intimate experience with all the convenience of connected technology. The iFlame app, when integrated with an outdoor fireplace from Heat n Glo, helps you create the perfect ambiance for an outdoor or indoor soiree. Heat n Glo fireplaces and firepits can be permanently installed or something you move around your yard. Available in wood or gas, these smart-home-enabled fireplaces are a great accent piece as well as an informal gathering place for groups.



MUSIC TO YOUR BEERS

Keep on rockin’ even when the party moves outside. Now it’s easier than ever to bring your favorite tunes into the alfresco thanks to outdoor speakers built to withstand the elements. Outdoor & Landscape Speakers from Episode produce a rich, powerful soundscape and blend seamlessly with the natural beauty of your backyard.

Designed to be either the centerpiece of your patio or hidden away disguised as rocks, Episode’s industry-leading technology offers gorgeous sound in open-air environments. They are available in different finishes and colors to fit right alongside your existing landscaping, perfectly suited whether you’re playing to a concert of one or providing background music for a larger event.

A SCREEN BUILT TO BE SEEN

If watching television outside sounds like the ultimate luxury, know that it’s possible to have the best of both worlds: you can catch up on your favorite shows, watch classic films, and host “big game” parties while also enjoying the great outdoors. Just don’t attempt this with an indoor TV—indoor and outdoor TVs are not created equal. You’ll need a television with weatherproof features as well as wall or ceiling mounts that can cope with Mother Nature’s worst.



Look no further than the Sunbrite line of products. All Sunbrite TV models are excellent for outdoor use, whether you’re revamping a shaded veranda or going full sun by the pool. Sunbrite has taken the joy of vegging out in your living room and combined it with dynamic, durable, smart technology. With the vibrant clarity of 4K Ultra HD, additional brightness levels and TruVision™ anti-glare assistance, this TV is ready to take center stage at your next backyard BBQ.

HOME BREW FOR THE WHOLE CREW

Popping (beer) bottles is a timeless party tradition. And in recent years, it’s become easier than ever to make homebrewing a hobby. Elevate your bartender game by serving home-brewed selections to your guests at the next outdoor function.

Brewing devices like BeerDroid’s fully automatic system are designed for those

with a taste for the high life. With a companion smartphone app, you can adjust various settings to your liking, then watch the progress of your beverage as it brews. To use, simply fill the droid with water and put in a “BrewPrint”—a pre-mixed packet of fresh ingredients. With a vast selection of recipes, it’s easy to customize your ales depending on the occasion. Crack open a cold one and toast to yourself, you genius.

LIGHT UP THE NIGHT

The best outdoor tech gadgets operate in a green, sustainable way. With the sun above us, solar power is highly cost-effective and eco-friendly. Many outdoor solar lights are perfect for all weather conditions and easy to install, too. Illuminating!

AmeriTop Solar Lights produce a whopping 5000K bright output, assisting with your home security in addition to

lighting up the night. These lights have an innovative design with three heads to cover a 180-degree sensing angle out to 49 feet. They can be installed almost anywhere in your yard and adjusted to fit your personal specifications. With a high-efficiency solar panel, they can grab a full charge even on overcast or rainy days.

2020 is the year to transform your green space into a source of enjoyment and relaxation! The right pieces of technology add functional style and organization to backyards of all sizes. From specialty TVs to high-tech home brews, the sky’s the limit for creating your ultimate outdoor retreat. ■



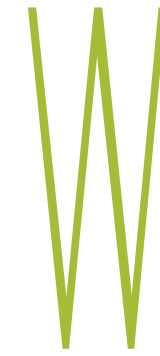
THE JEWEL OF WAIKIKI

SMART HOME PROFESSIONAL:
Sean Toland, Engineered Lifestyles

PROJECT LOCATION:
Waikiki, Hawaii

Crystal Watts

SMART TECHNOLOGY HAS RAISED LUXURY SERVICE TO NEW HEIGHTS AT AN EXCLUSIVE NEW NINE-STORY BOUTIQUE HOTEL FOR THE RICH AND FAMOUS IN ONE OF HAWAII'S MOST SEDUCTIVE CELEBRITY HOTSPOTS.



Waikiki Beach on the Hawaiian island of Oahu has long been a magnet for the rich and famous. A favorite surfing spot of the Hawaiian royal family in the 1800s, by the end of the century it was attracting celebrities of the day, including Treasure Island author Robert Louis Stevenson, before blossoming into a tourist paradise in the 20th century.

Now the island has a new treasure to attract any stars and seekers of exclusivity with enough cash to spare: Espacio, a nine-story boutique hotel featuring the latest smart technology, where guests can ride a breathtaking wave of luxury in one of the world's most sublime settings.

What was once the 73-room Waikiki Beachside Hotel has been transformed into just nine ultra-luxury suites—one per floor—each boasting an impressive 2,250 square feet. All suites have three en suite bedrooms, a gourmet kitchen stocked with fine foods, a large living room with desk area, and a huge outdoor lanai with private jacuzzi. As guests come and go at their leisure, butlers are on hand to set up unique experiences for them, such as private art viewings or exclusive film screenings.



PHOTOS COURTESY PAT MYERS PHOTOGRAPHY

EACH SUITE OFFERS SWEEPING VIEWS OF FAMOUS KALAKAUA AVENUE, WAIKIKI (OR "KUHIO") BEACH, SURFERS, CATAMARANS, AND A CENTURY-OLD INDIAN BANYAN TREE.

There is also a shared rooftop deck with a stunning, color-changing infinity edge pool, a fully stocked outdoor kitchen, and extraordinary views over the whole of the Waikiki strip, including a bird's-eye view of some of the finest surfing you're likely to see.

Espacio's owners, Kowa Waikiki LLC, chose chandeliers custom-crafted in Morocco, hand-knotted carpets shipped in from China, and marble for the bathrooms and tabletops specially produced in Italy. Each suite is also packed with top-of-the-range amenities and appliances from high-end brands such as Dyson, Wolf, and Panasonic.

Every suite has its own private elevator and the hotel's high-flying guests can count on privacy and tranquility. "Celebrities that come here won't be bothered by other guests, photographers, or autograph hunters," says Espacio's general manager, Brent Kitsu. "There is only one way in and one way out, so if someone doesn't have a key, they cannot enter the property. That's part of the exclusivity, privacy, and safety you'll find here. And since we only have nine suites, if a guest were to lose a key, we'd recognize them and replace it immediately."

Smart tech is key both to guests' luxury experience and ensuring hotel staff are able to deliver an unparalleled level of service. Control4 Smart Home Professional Sean Toland, of Engineered Lifestyles, oversaw the technology side of the two-year project—from liaising with architects on the challenging installation of cabling at the start, all the way to helping the hotel perfect the guest experience with custom lighting levels and song choices once the refit was complete.

"It was such a joy to use the Control4 product line to create Hawaii's first fully automated, five-star, ultra-luxury hotel," says Sean. "Control4 allows the hospitality experience to be tailored to what both the hotel and its guests desire."

Guests have full control over streaming music, lighting, blinds, thermostats, and other functions, and can manage everything from easy-to-use, intuitive keypads to touchscreens and iPads. "The experience really is a step above," says Brent. "The Japanese owners are well-versed in technology and luxury and have created something Hawaii has never seen."

Sean adds: "Guests young and old can comfortably use the system without assistance or confusion. There are three lighting control panels on each floor. Guests have full control over the living room audio experience,



The appearance of the reception area—including the hand-crafted and illuminated Moroccan fixtures—exposes guests to the character of Espacio.

The exquisite design flows seamlessly into each opulent suite.



OUR LUXURY
SERVICE
STANDARD
MEANS WE
INSIST ALL
OUR GUESTS'
NEEDS ARE
MET WITHIN
FIVE MINUTES
MAXIMUM.





CONTROL4'S EASE OF INTEGRATION WITH OTHER SYSTEMS AND SERVICES MADE IT THE IDEAL CHOICE FOR THE LEVEL OF CUSTOMIZATION THE HOTEL WAS SEEKING.

with Triad One audio in the bathrooms. The system is also fully integrated with the Sound Machine commercial music service, which allows them to select or create playlists."

The system is integrated with the hotel's guest experience management platform, Intelly, which lets guests use their iPads to do things like book spa appointments, set dining reservations, and schedule tours. "The Control4 technology talks to Intelly and creates profiles that are assigned to each of our guests so that the next time they visit, music, lighting, and temperature preferences are already set for their stay," says Brent.

Control4's ease of integration with other systems and

services made it the ideal choice for the level of customization the hotel was seeking. "The fact it supports so many diverse hospitality and residential applications meant there wasn't a single technology problem that we weren't able to solve through the use of Control4 or one of its partners," says Sean.



A privacy button inside the front door changes the light on the doorbell outside to red, indicating that the guests don't want to be disturbed. It also sends an alert to staff so they know a guest wants no interruptions, without them even having to step foot on the floor.







GUESTS HAVE FULL CONTROL OVER STREAMING MUSIC, LIGHTING, BLINDS, THERMOSTATS, AND OTHER FUNCTIONS, AND CAN MANAGE EVERYTHING FROM EASY-TO-USE INTUITIVE KEYPADS, TOUCHSCREENS, AND IPADS.



The many ways the technology allows the hotel to optimize its service levels lifts Espacio to new heights of excellence. The hotel's facilities manager, Lesley Ann Inayoshi, explains, "On various keypads in the suite, our team has hidden commands that will allow us to activate certain scenes. For instance, from the keypad in the pantry we can triple-press to activate the 'Turndown' scene. This sets the lights to a relaxing level throughout, turns on the sconces over each of the beds, sets the temperature to 75°, and begins playing soft music in the living room and bedrooms. The Control4 technology allows our team behind the scenes to be more efficient. As we speak, we are working on setting up an 'All Off' setting that puts the suite into an energy-saving mode."

Indeed, Sean Toland says sustainability is a key feature of the implementation. "There's a great deal of intelligence going on in the rooms. We've set the system up to be very green—shutting lights down when there's no motion in rooms, presetting light levels based on the time of day, and setting thermostats based on the time of year."

As well as saving energy and maintenance costs, the system also saves time. Brent Kitsu says, "Our luxury service standard means we insist all our guests' needs are met within five minutes maximum. Thanks to the technology and the way the suites are set up, we can typically respond in less than three minutes. Guests can even send us requests via the Inteliity app. We've given our staff mobile devices so they see and respond to these requests instantly, without them having to be passed via the front desk," says Brent.

But the team is always driving to make things better for its demanding guests, and work is already under way to extend the ultra-luxury service levels even further. "Before long, guests will be able to order room service when they're out—shopping or visiting the North Shore, say—so they have dinner or wine waiting for them the moment they arrive back at their suite," says Brent.

And although the hotel had only been open for a month when *Smart Home* visited, it was already attracting star attention. Brent says: "We've had the privilege of hosting some celebrities already, such as actress and reality TV star Jenny Garth, and they've all felt the 'WOW' factor. Nothing compares to it. When you see it, experience it, smell it...it truly captivates all of your senses." ■



THERE'S A GREAT DEAL OF INTELLIGENCE GOING ON IN THE ROOMS. WE'VE SET THE SYSTEM UP TO BE VERY GREEN.



NOTHING COMPARES TO IT. WHEN YOU SEE IT, EXPERIENCE IT, SMELL IT...IT TRULY CAPTIVATES ALL OF YOUR SENSES.



Brent Kitzu (center), pictured here with a few members of Espacio's staff, have a collective passion to deliver unsurpassed guest experiences.

STATE OF THE SMART

Control4 Smart Home OS 3 thoughtfully complements your home's décor or architecture, working behind the scenes and blending seamlessly into your environment. Enjoy a home that is more energy efficient, comfortable, convenient, and secure with personalized features and experiences that transform your dream home into a *dream way of living*.



Control4®

Smart Home Automation

Control4.com

©2020, Wirepath Home Systems, LLC. All rights reserved. Control4 and their respective logos are registered trademarks or trademarks of Wirepath Home Systems, LLC, dba "Control4" in the United States and/or other countries. Other names and brands may be claimed as the property of their respective owners. All specifications subject to change without notice.